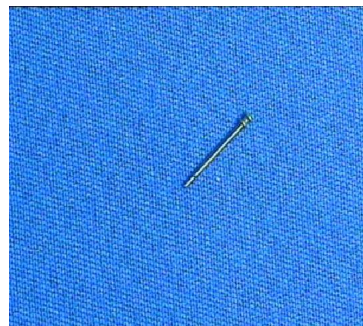




SHEFFIELD ANALYTICAL SERVICES
A Division of Sheffield Assay Office

Tierra Cast
3177 Guernville Road
Santa Rosa
California
USA
CA 95401



Order No.

Report No. 05013/01 Issued:01/02/2008 Reprinted: 01/02/2008 Extract Page 01

Reference : TITANI POST		Sample Date : 21/01/2008	Serial Number : 0130
Elution Test			
ELEMENT	RESULT		
Ni Elution	XXXXX		
Pin	<0.1 Pass		
TITANIUM POST			

Elution results reported as $\mu\text{g}/\text{cm}^2/\text{week}$.
 Tested to BSEN1811 inc BSEN12472 (unless stated otherwise)
 Piercing assemblies Pass = $<0.2 \mu\text{g}/\text{cm}^2/\text{week}$.
 Other components Pass = $<0.5 \mu\text{g}/\text{cm}^2/\text{week}$.

Signature: A.S. Manager - C D Jarvis

A.S. Supervisor - F M Hudson

