

Tierra Cast
3177 Guernville Road
Santa Rosa
California
USA
CA 95401



Order No.

Report No. 05022/01 Issued: Reprinted: 04/06/2010 Extract Page 01

Reference : SWEETCOPPER		Sample Date : 21/05/2010	Serial Number : 0106
Elution Test			
ELEMENT	RESULT		
Ni Elution Pendant	XXXXX <0.1 Pass		

Elution results reported as $\mu\text{g}/\text{cm}^2/\text{week}$.
Tested to BSEN1811 inc BSEN12472 (unless stated otherwise)
Piercing assemblies Pass = $<0.2 \mu\text{g}/\text{cm}^2/\text{week}$.
Other components Pass = $<0.5 \mu\text{g}/\text{cm}^2/\text{week}$.

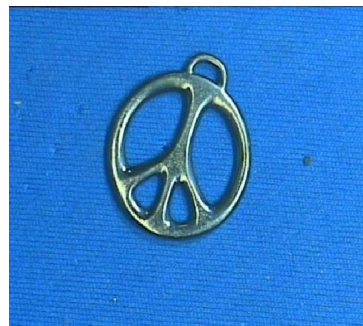
Signature: A.S. Team Leader- M Wood
Lab Manager - F M Hudson





SHEFFIELD ANALYTICAL SERVICES
A Division of Sheffield Assay Office

Tierra Cast
3177 Guernville Road
Santa Rosa
California
USA
CA 95401



Order No.

Report No. 05022/01 Issued:04/06/2010 Reprinted: 04/06/2010 Extract Page 01

Reference : SWEETBLACK

Sample Date : 21/05/2010

Serial Number : 0107

Elution Test

ELEMENT	RESULT
Ni Elution	XXXXX
Pendant	<0.1 Pass

Elution results reported as $\mu\text{g}/\text{cm}^2/\text{week}$.
Tested to BSEN1811 inc BSEN12472 (unless stated otherwise)
Piercing assemblies Pass = $<0.2 \mu\text{g}/\text{cm}^2/\text{week}$.
Other components Pass = $<0.5 \mu\text{g}/\text{cm}^2/\text{week}$.

Signature: A.S. Team Leader- M Wood

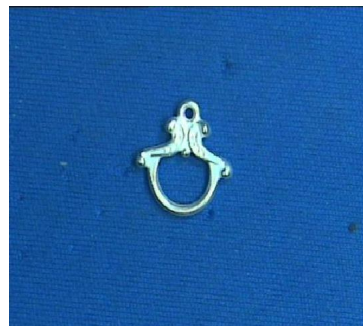
Lab Manager - F M Hudson





SHEFFIELD ANALYTICAL SERVICES
A Division of Sheffield Assay Office

Tierra Cast
3177 Guernville Road
Santa Rosa
California
USA
CA 95401



Order No.

Report No. 05022/01 Issued:04/06/2010 Reprinted: 04/06/2010 Extract Page 01

Reference : SWEETSILVER		Sample Date : 21/05/2010	Serial Number : 0108
Elution Test			
ELEMENT	RESULT		
Ni Elution Pendant	XXXXX <0.1 Pass		

Elution results reported as $\mu\text{g}/\text{cm}^2/\text{week}$.
Tested to BSEN1811 inc BSEN12472 (unless stated otherwise)
Piercing assemblies Pass = $<0.2 \mu\text{g}/\text{cm}^2/\text{week}$.
Other components Pass = $<0.5 \mu\text{g}/\text{cm}^2/\text{week}$.

Signature: A.S. Team Leader- M Wood
Lab Manager - F M Hudson





SHEFFIELD ANALYTICAL SERVICES
A Division of Sheffield Assay Office

Tierra Cast
3177 Guernville Road
Santa Rosa
California
USA
CA 95401



Order No.

Report No. 05022/01 Issued:04/06/2010 Reprinted: 04/06/2010 Extract Page 01

Reference : SWEETBRASSO		Sample Date : 21/05/2010	Serial Number : 0109
Elution Test			
ELEMENT	RESULT		
Ni Elution	XXXXX		
Pendant	<0.1 Pass		
SWEET BRASS OX			

Elution results reported as µg/cm2/week.
Tested to BSEN1811 inc BSEN12472 (unless stated otherwise)
Piercing assemblies Pass = <0.2 µg/cm2/week.
Other components Pass = <0.5 µg/cm2/week.

Signature: A.S. Team Leader- M Wood
Lab Manager - F M Hudson

